

Figure No.

1

DRAFT

Title

Bellflower Screening Plan - Henry County

Client/Project

Lightsource BP
Bellflower Solar

2028113214

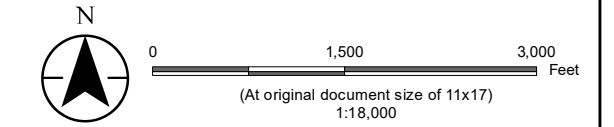
Project Location

Henry County, Indiana

Prepared by JKM on 2020-09-24

TR by TPS on 2019-09-30

IR by JLO on 2020-09-25



- Page Index
- Project Fence Line
- Panel Array
- Pre-existing Natural Screening
- Vegetative Screening
- County Line



- Notes**
1. Coordinate System: NAD 1983 StatePlane Indiana East FIPS 1301 Feet
 2. Data Sources: Lightsource BP, Stantec
 3. Orthoimagery © Bing Maps
 4. Microsoft product screen shot(s) reprinted with permission from Microsoft Corporation



\\us0265-ppl\ss01\shred_projects\2028113238\2028113214\113214_screening_index_henry.mxd Revise: 2020-10-13 By: kameeks



Figure No.

1

DRAFT

Title

Bellflower Screening Plan - Henry County

Client/Project

Lightsource BP
Bellflower Solar

2028113214

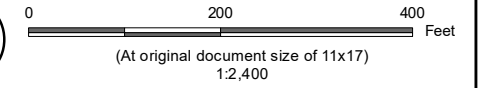
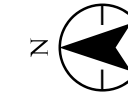
Project Location

Henry County, Indiana

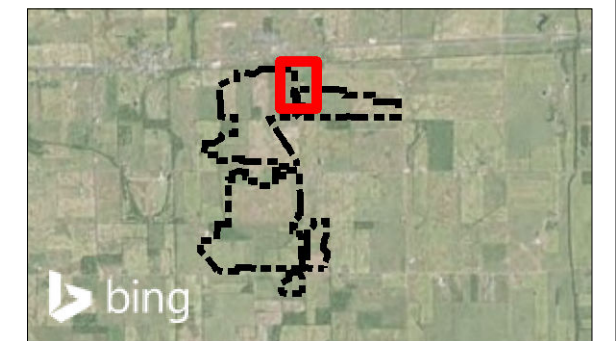
Prepared by JKM on 2020-09-24

TR by TPS on 2020-09-30

IR by JLO on 2020-09-25



- - - Fence
- Panel Array
- █ Vegetative Screening
- Pre-existing Natural Screening



- Notes**
1. Coordinate System: NAD 1983 StatePlane Indiana East FIPS 1301 Feet
 2. Data Sources: Lightsource BP, Stantec
 3. Orthoimagery © Bing Maps
 4. Microsoft product screen shot(s) reprinted with permission from Microsoft Corporation



\\us0265-pp\ss01\shred_projects\2028113238\2028113214\113214_screening_plan_henry.mxd Revised: 2020-10-13 By: kameeks

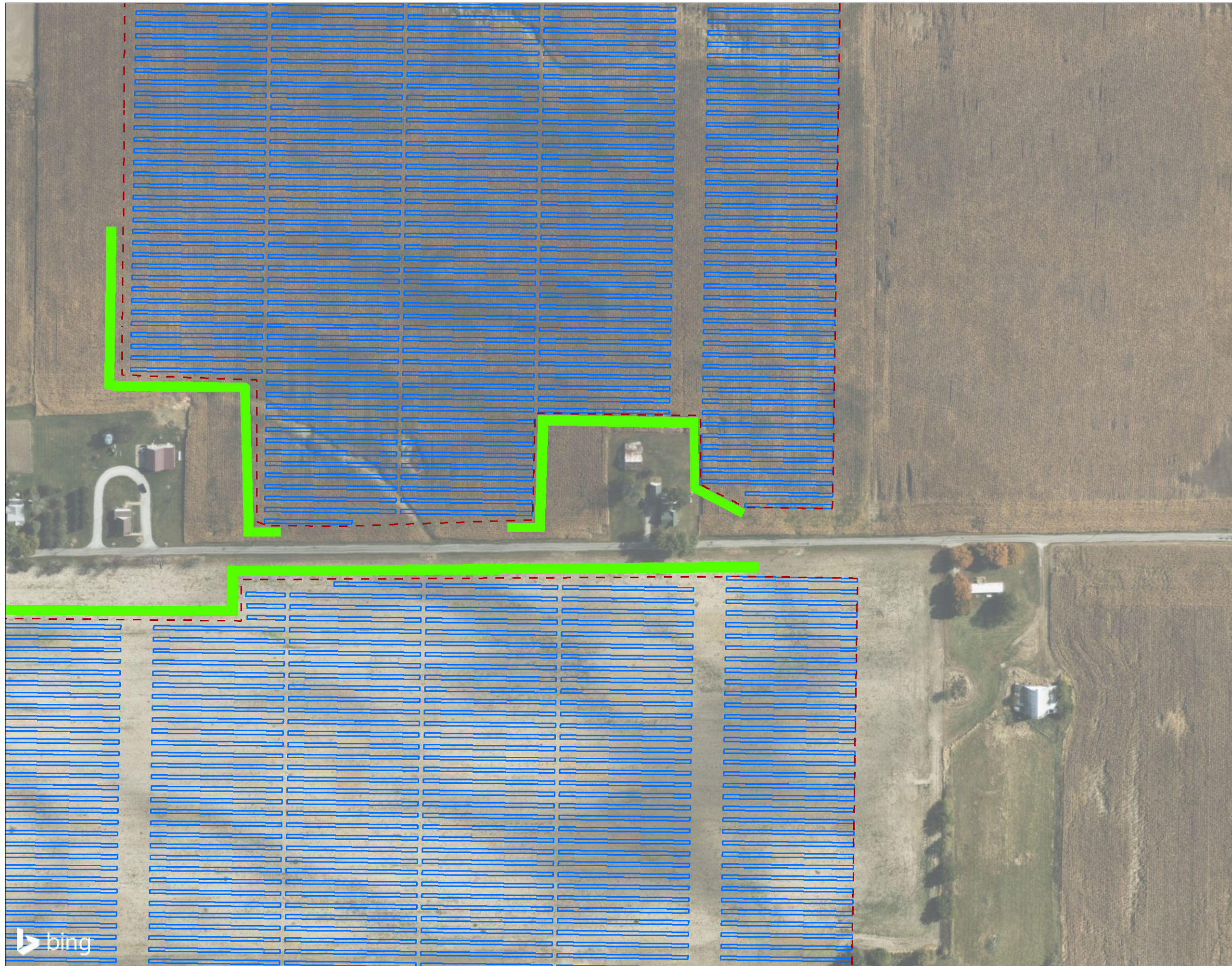


Figure No.

1

DRAFT

Title

Bellflower Screening Plan - Henry County

Client/Project

Lightsource BP
Bellflower Solar

2028113214

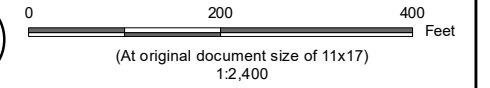
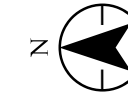
Project Location

Henry County, Indiana

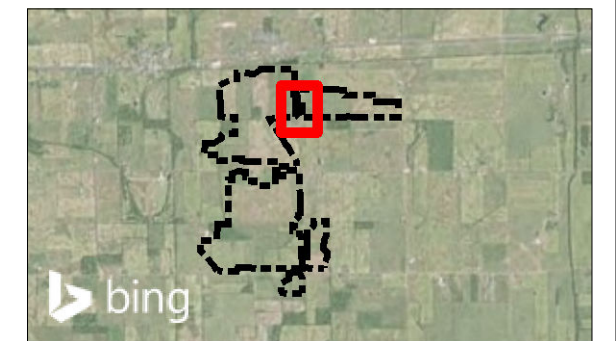
Prepared by JKM on 2020-09-24

TR by TPS on 2020-09-30

IR by JLO on 2020-09-25



- - - Fence
- Panel Array
- █ Vegetative Screening
- ▨ Pre-existing Natural Screening



- Notes**
1. Coordinate System: NAD 1983 StatePlane Indiana East FIPS 1301 Feet
 2. Data Sources: Lightsource BP, Stantec
 3. Orthoimagery © Bing Maps
 4. Microsoft product screen shot(s) reprinted with permission from Microsoft Corporation



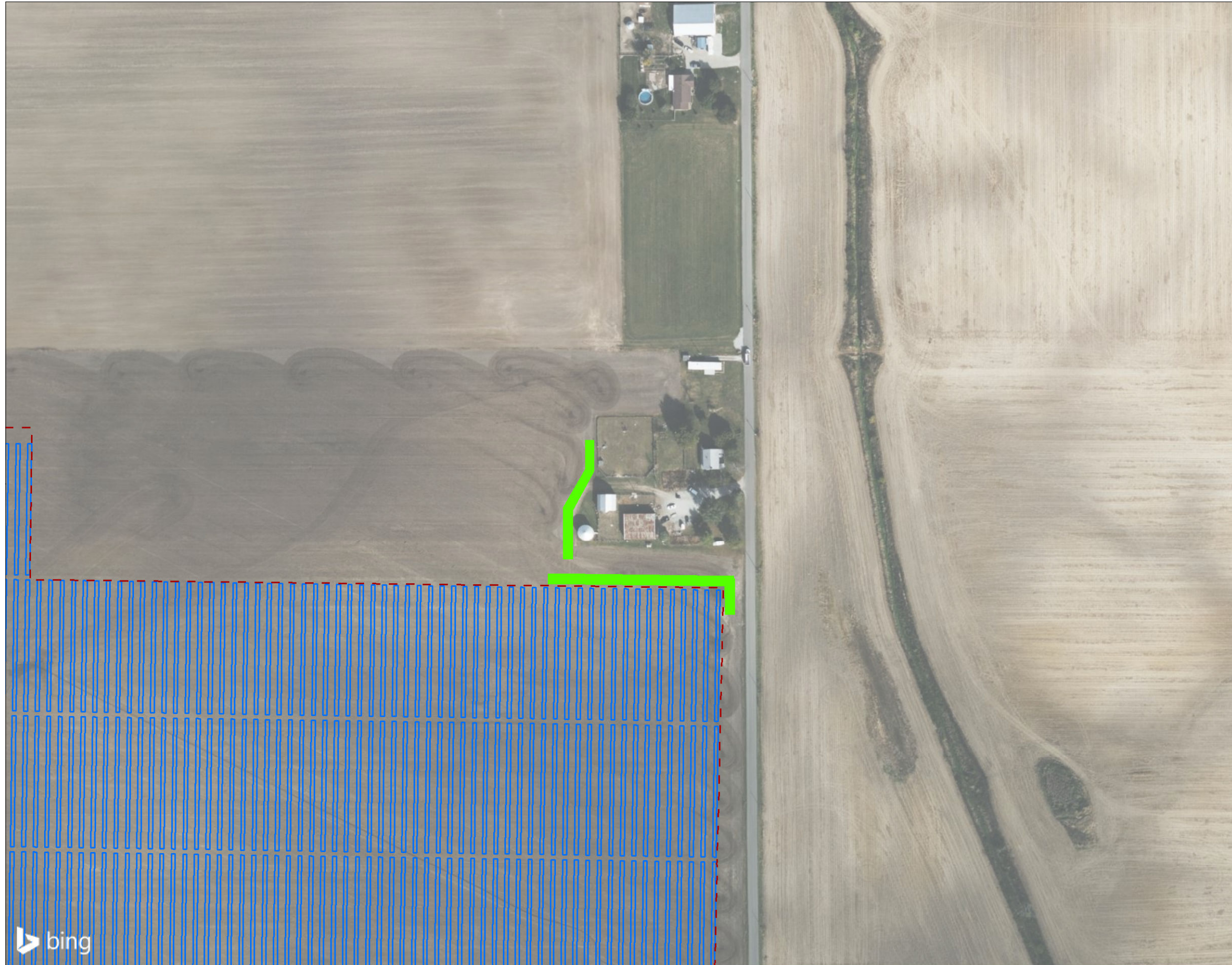


Figure No.

1

DRAFT

Title

Bellflower Screening Plan - Henry County

Client/Project

Lightsource BP
Bellflower Solar

2028113214

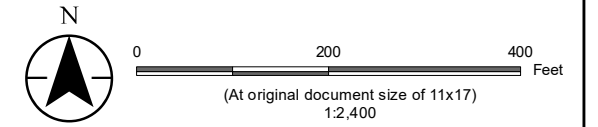
Project Location

Henry County, Indiana

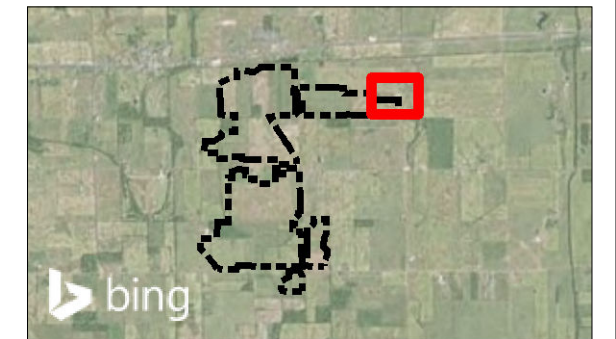
Prepared by JKM on 2020-09-24

TR by TPS on 2020-09-30

IR by JLO on 2020-09-25



- - - Fence
- — — Panel Array
- Vegetative Screening
- Pre-existing Natural Screening



- Notes**
1. Coordinate System: NAD 1983 StatePlane Indiana East FIPS 1301 Feet
 2. Data Sources: Lightsource BP, Stantec
 3. Orthoimagery © Bing Maps
 4. Microsoft product screen shot(s) reprinted with permission from Microsoft Corporation



\\us0265-pplfs01\shared_projects\2028113238\2028113214\1113214_screening_plan_henry.mxd Revised: 2020-10-13 By: kameeks

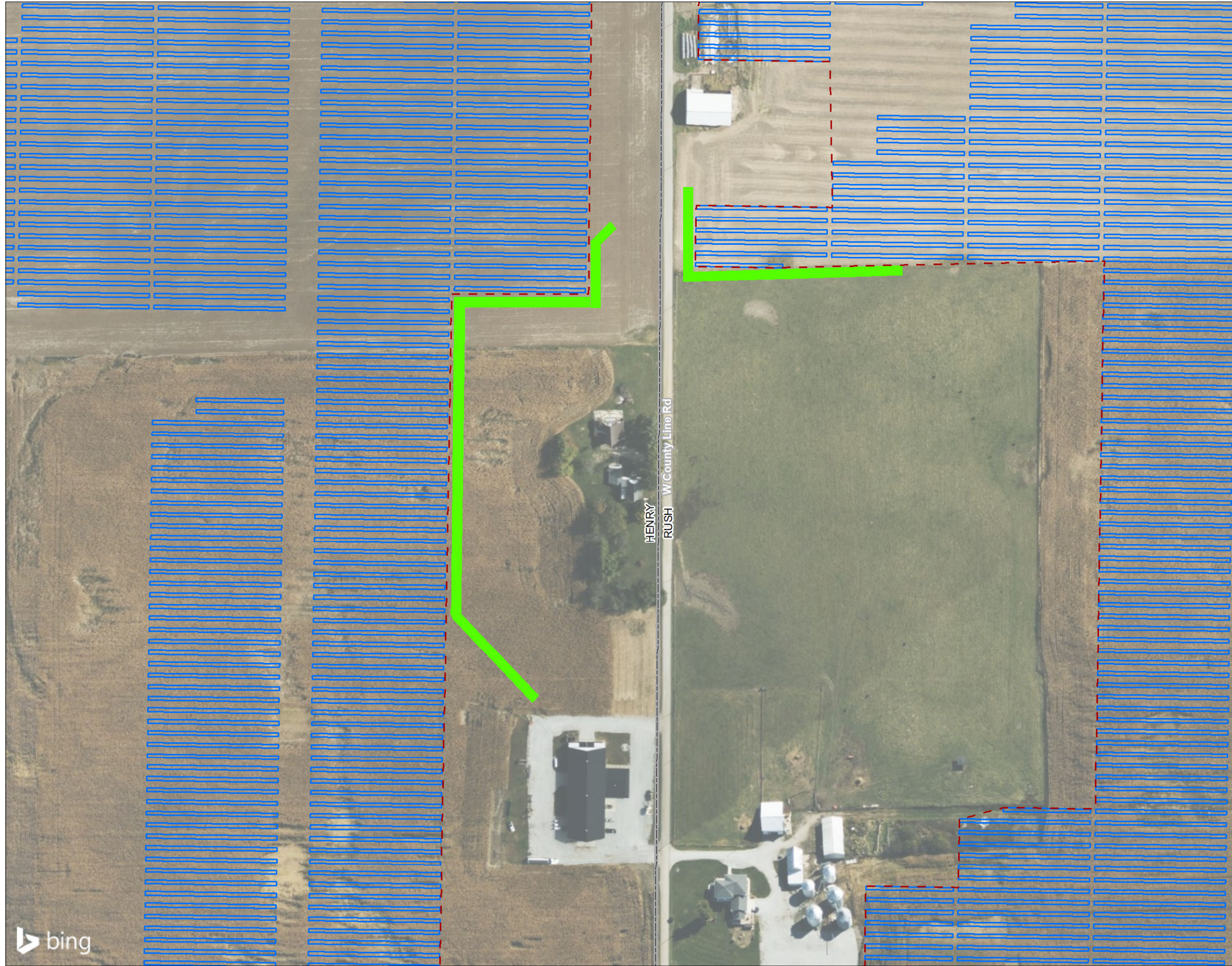


Figure No.

1

DRAFT

Title

Bellflower Screening Plan - Henry County

Client/Project

Lightsource BP
Bellflower Solar

2028113214

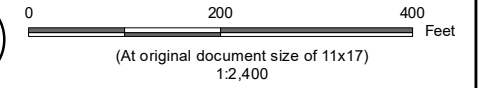
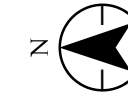
Project Location

Henry County, Indiana

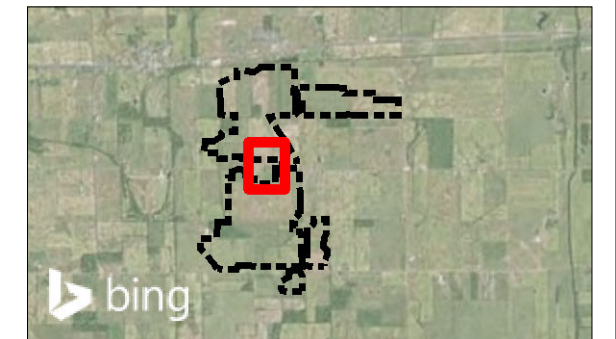
Prepared by JKM on 2020-09-24

TR by TPS on 2020-09-30

IR by JLO on 2020-09-25



- - - Fence
- Panel Array
- Vegetative Screening
- ▤ Pre-existing Natural Screening



- Notes**
1. Coordinate System: NAD 1983 StatePlane Indiana East FIPS 1301 Feet
 2. Data Sources: Lightsource BP, Stantec
 3. Orthoimagery © Bing Maps
 4. Microsoft product screen shot(s) reprinted with permission from Microsoft Corporation



\\us0265-pp\iss01\shred_projects\2028113238\2028113214\1113214_screening_plan_henry.mxd Revised: 2020-10-13 By: kameeks

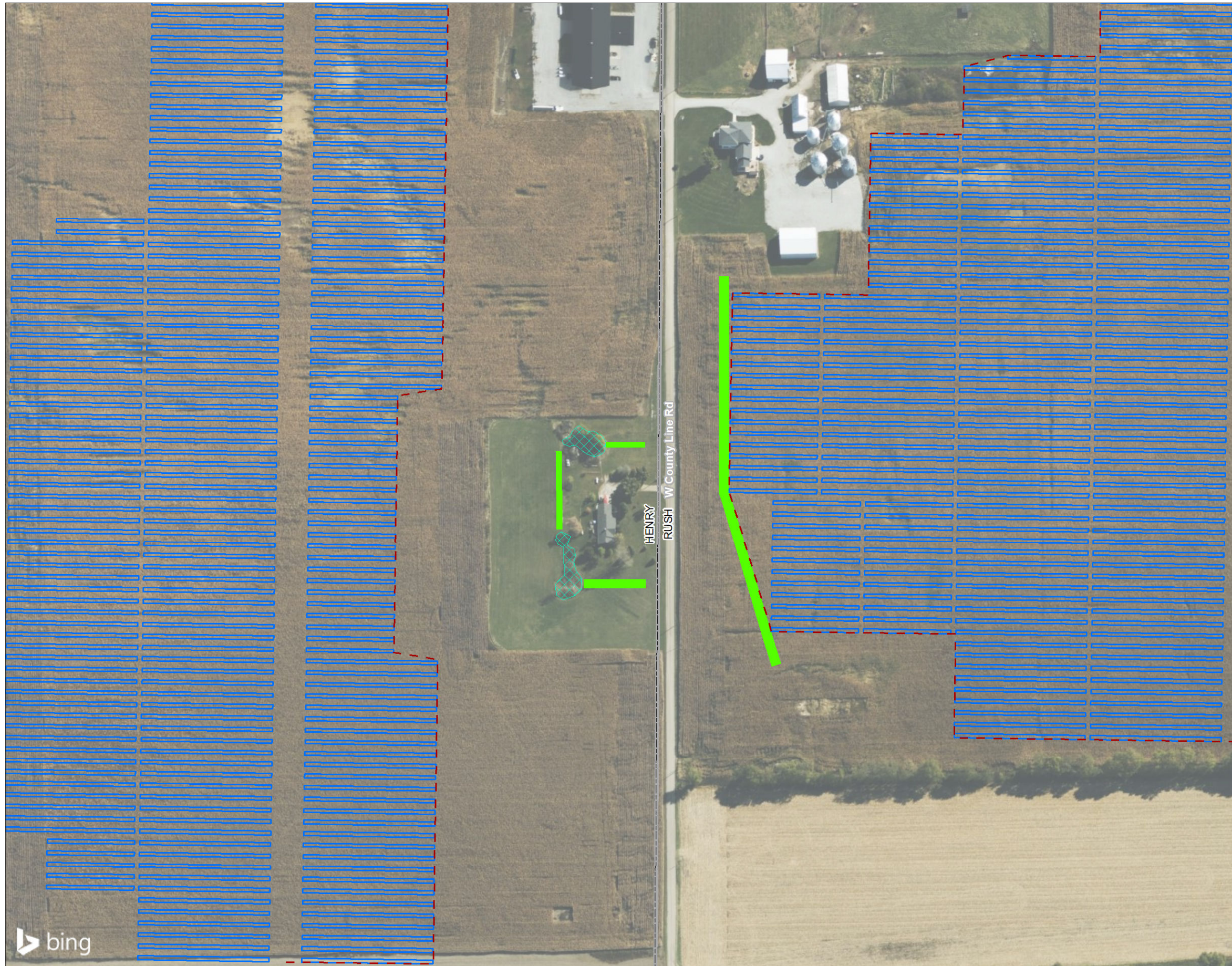


Figure No.

1

DRAFT

Title

Bellflower Screening Plan - Henry County

Client/Project

Lightsource BP
Bellflower Solar

2028113214

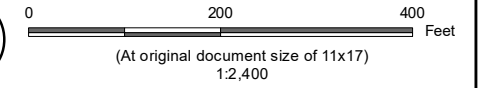
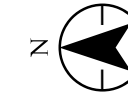
Project Location

Henry County, Indiana

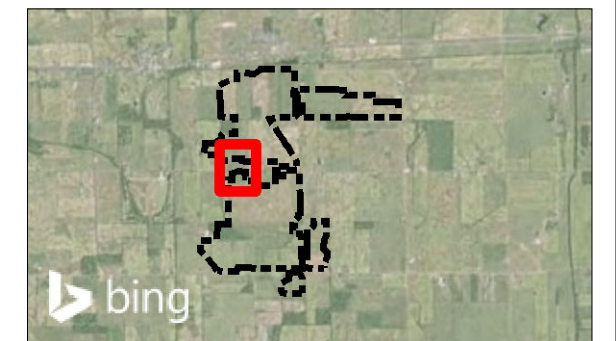
Prepared by JKM on 2020-09-24

TR by TPS on 2020-09-30

IR by JLO on 2020-09-25



- - - Fence
- Panel Array
- Vegetative Screening
- ▨ Pre-existing Natural Screening



- Notes
1. Coordinate System: NAD 1983 StatePlane Indiana East FIPS 1301 Feet
 2. Data Sources: Lightsource BP, Stantec
 3. Orthoimagery © Bing Maps
 4. Microsoft product screen shot(s) reprinted with permission from Microsoft Corporation



VEGETATIVE SCREENING NOTES

GENERAL NOTES

- LANDSCAPE SCREENING SHALL BE PROVIDED AS INDICATED ON THE CONCEPTUAL SITE PLAN INCLUDED WITH THE SPECIAL USE PERMIT APPLICATION AND THE LANDSCAPE PLAN ATTACHED HERETO.
- LANDSCAPE SCREENING SHALL CONSIST OF A PLANTED STRIP TEN (10) TO FIFTEEN (15) FEET WIDE EXTENDING FROM THE PROJECT FENCE LINE, AND SHALL BE LOCATED WHERE NECESSARY TO SCREEN THE PROJECT FROM ADJACENT RESIDENCES AS NEEDED.
- AN EXISTING TREE LINE MAY COUNT AS SCREENING IF THE TREES ARE HEALTHY AND ARE EQUAL TO OR GREATER THAN THE REQUIRED SCREENING HEIGHT AND DENSITY.
- SCREENING PLAN WILL PROVIDE A VISUAL BARRIER WITH A PREDICTED MINIMUM HEIGHT OF SEVEN (7) FEET WITHIN THREE (3) YEARS OF PLANTING. A MINIMUM HEIGHT OF EIGHT (8) TO FIFTEEN (15) FEET IS TO BE MAINTAINED OVER THE LIFE OF THE PROJECT.
- UNHEALTHY AND DEAD PLANT MATERIAL SHALL BE REPLACED WITHIN ONE (1) YEAR OF THE OWNER RECEIVING NOTIFICATION OF THE ISSUE.

PLANTING NOTES

- TREES PLANTED AS VEGETATIVE SCREEN SHALL BE A MINIMUM OF FOUR (4) FEET TALL AT TIME OF PLANTING AND EXPECTED TO GROW TO A MINIMUM OF SEVEN (7) TO FIFTEEN (15) FEET AT MATURITY.
- SCREEN SHALL BE MAINTAINED IN GOOD CONDITION UNTIL THE FACILITY HAS BEEN DECOMMISSIONED OR REMOVED.
- PLANTS ARE TO BE INSTALLED IN TWO OFFSET ROWS. SPACE PLANTS ON CENTERS THAT WILL PROMOTE CLOSURE BUT MAINTAIN HEALTH OF THE PLANT MATERIAL. EXACT SPACING TO BE DETERMINED BY THE GROWTH CHARACTERISTICS OF THE SPECIES.
- DISTRIBUTION SHALL BE AS SHOWN ON FINAL PLANTING PLAN.
- CONTRACTOR IS RESPONSIBLE FOR PLANT LAYOUT. THE INTENT IS FOR THE PLANTING TO CREATE A FULL SCREEN OF THE SOLAR PANELS IN 4 TO 6 YEARS.
- TYPICALLY, SCREENING PLANTS LOCATED ALONG PROJECT FENCE SHOULD HAVE A MATURE HEIGHT OF APPROXIMATELY 8 TO 15 FEET.
- IN ALL CASES, THE POTENTIAL FOR SHADING OF SOLAR EQUIPMENT IS TO BE EVALUATED AND AVOIDED.

LEGEND	QUANTITY	BOTANICAL NAME	Common Name	MATURE HEIGHT	MATURE WIDTH	SPECIFICATION
VEGETATIVE SCREENING PLANT PALETTE						
	TBD	Chamaecyparis lawsoniana 'Pembury Blue'	Lawson Cypress	8' - 10'	4' - 5'	Minimum 3-gallon container. 36" Height
	TBD	Ilex x meserveae 'Blue Prince'*	Blue Prince Holly	6' - 8'	3' - 6'	Minimum 3-gallon container. 36" Height
	TBD	Ilex x meserveae 'Blue Princess'*	Blue Princess Holly	8' - 10'	6' - 8'	Minimum 3-gallon container. 36" Height
	TBD	Ilex x 'Rutzan'	Red Beauty Holly	7' - 10'	4' - 5'	Minimum 3-gallon container. 36" Height
	TBD	Juniperus chinensis 'Mountbatten'*	Mountbatten Juniper	10' - 12'	12' - 15'	Minimum 3-gallon container. 36" Height
	TBD	Juniperus chinensis 'Pfitzeriana'*	Chinese Juniper	5'	10'	Minimum 3-gallon container. 36" Height
	TBD	Thuja occidentalis 'Emerald Green'*	Emerald Green Arborvitae	10' - 15'	3' - 15'	Minimum 3-gallon container. 36" Height
	TBD	Juniperus chinensis 'Fairview'*	Fairview Chinese Juniper	10' - 15'	4' - 9'	Minimum 3-gallon container. 36" Height
	TBD	Juniperus chinensis 'Iowa'*	Iowa Juniper	10' - 15'	5' - 10'	Minimum 3-gallon container. 36" Height
	TBD	Juniperus scopulorum 'Medora'*	Medora Juniper	10' - 15'	4' - 6'	Minimum 3-gallon container. 36" Height
	TBD	Juniperus scopulorum 'Welchii'*	Welch Juniper	8' - 12'	4' - 5'	Minimum 3-gallon container. 36" Height
	TBD	Taxus x media 'Hicksii'*	Hicks Yew	8' - 12'	2' - 3'	Minimum 3-gallon container. 36" Height

* - Plant included in Table 23 of the Henry County Development Code

SOLAR ARRAYS

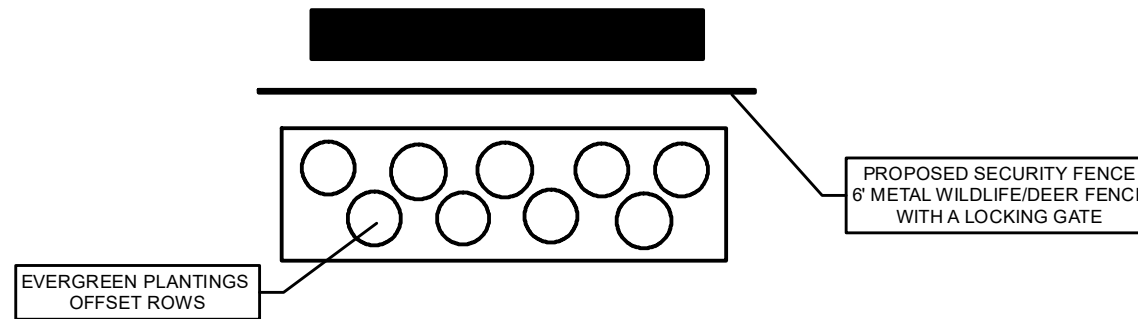


Figure No.

1

DRAFT

Title

Bellflower Screening Plan - Henry County

Client/Project

Lightsource BP
Bellflower Solar

2028113214

Project Location

Henry County, Indiana

Prepared by JKM on 2020-09-28

TR by TPS on 2020-09-30

IR by JLO on 2020-09-28



Notes

1. Coordinate System: NAD 1983 StatePlane Indiana East FIPS 1301 Feet
2. Data Sources: Lightsource BP, Stantec
3. Orthoimagery © Bing Maps
4. Microsoft product screen shot(s) reprinted with permission from Microsoft Corporation

