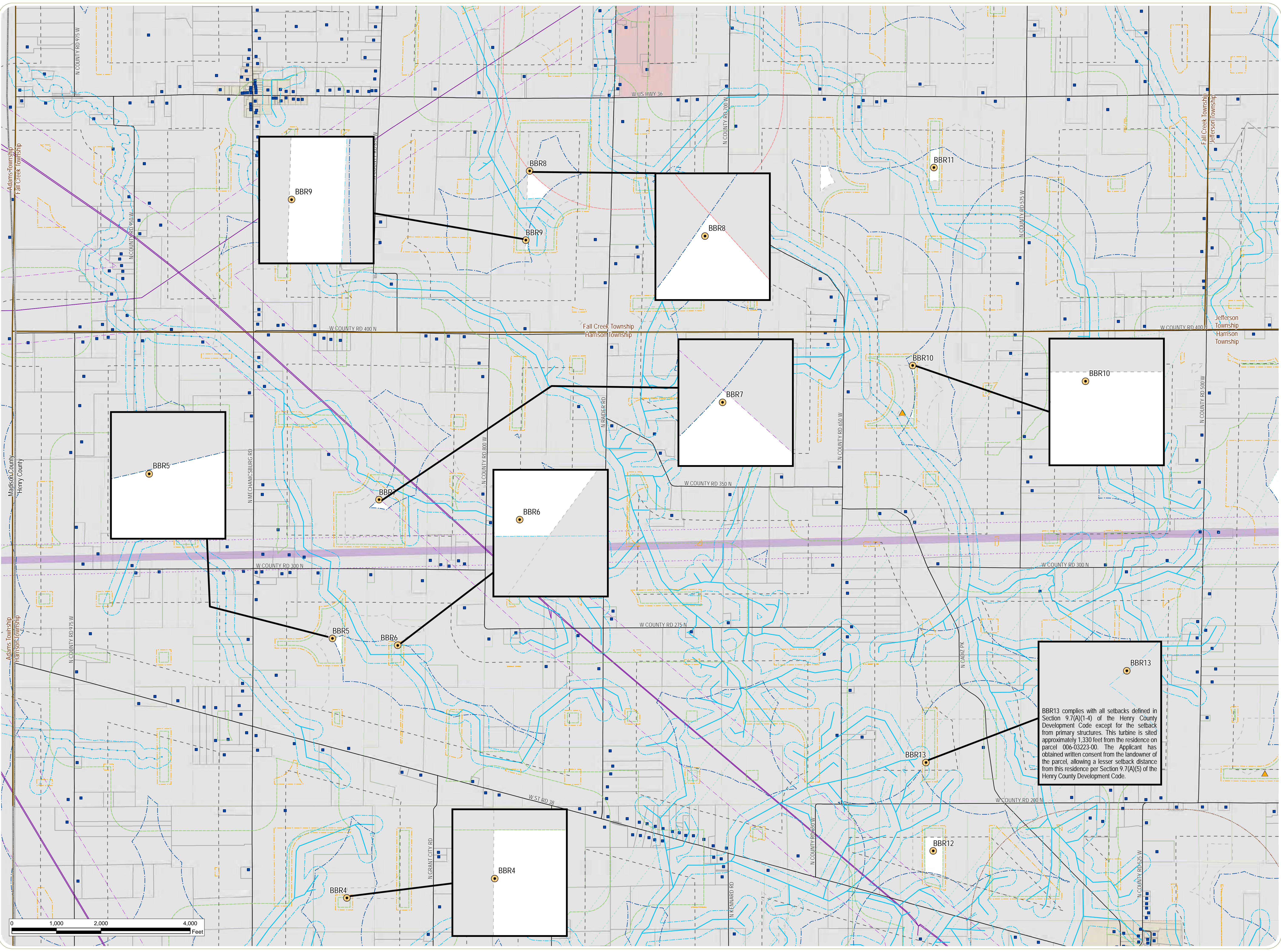


Big Blue River Wind Farm

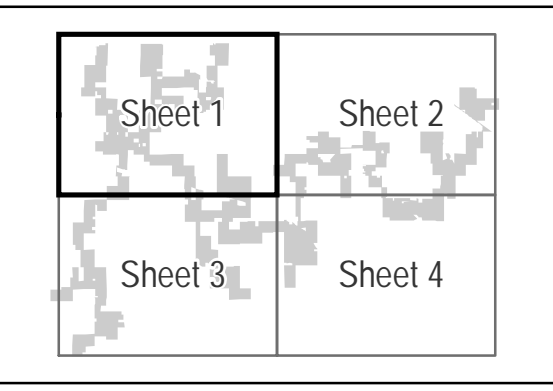
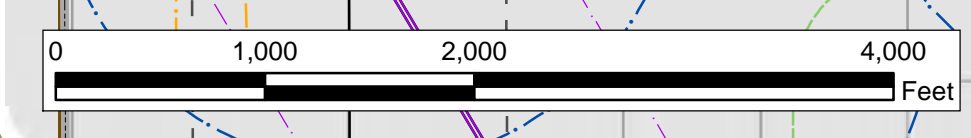
Fall Creek, Greensboro, Harrison, Jefferson, and Prairie Townships, Henry County, Indiana

Sheet 2: Setbacks

- Wind Turbine
- Primary Structure
- 1,501 Foot Setback From Primary Structure
- County Tile Drain
- County Regulated Drainage Ditch
- 200 Foot Setback From County Tile Drain and Drainage Ditch
- Existing Overhead Electric Transmission Line
- 750 Foot Setback from Overhead Transmission Line
- Power Performance Tower
- Power Performance Tower Setback
- Public Road
- 750 Foot Setback From Public Road
- Fresnel Zone
- 267 Foot Setback from Microwave Fresnel Zone
- 267 Foot Setback from Pipeline
- Participating Parcel
- 550 Foot Setback From Participating Parcel
- Non-Participating Parcel
- 750 Foot Setback From Non-Participating Parcel
- School Parcel
- 2,501 Foot Setback From Public School Parcel
- 2,501 Foot Setback from Incorporated Municipality
- Setback Area
- Township Boundary
- County Boundary



BBR13 complies with all setbacks defined in Section 9.7(A)(1-4) of the Henry County Development Code except for the setback from primary structures. This turbine is sited approximately 1,330 feet from the residence on parcel 006-03223-00. The Applicant has obtained written consent from the landowner of the parcel, allowing a lesser setback distance from this residence per Section 9.7(A)(5) of the Henry County Development Code.



Notes: 1. Basemap: Henry County parcel and public road data (2018). 2. This map was generated in ArcMap on May 30, 2019. 3. Power Performance Tower setback based on 1.5 x height of the Power Performance Tower from public roads, overhead transmission lines, parcel lines, and railroads. 4. This is a color graphic. Reproduction in grayscale may misrepresent the data.

www.edrpc.com

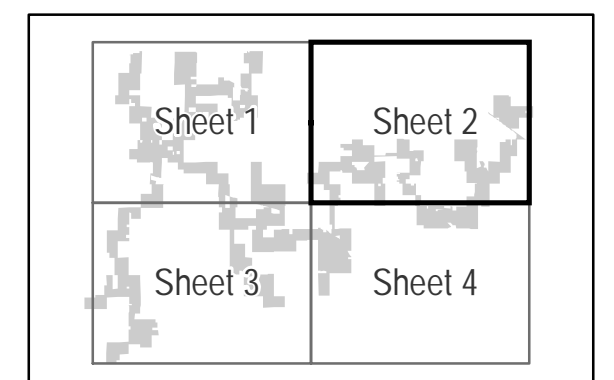
Big Blue River Wind Farm

Fall Creek, Greensboro, Harrison, Jefferson, and Prairie Townships, Henry County, Indiana

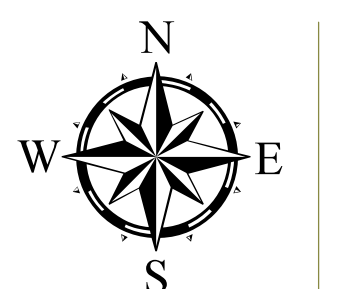
Sheet 2: Setbacks

- Wind Turbine
- Primary Structure
- 1,501 Foot Setback From Primary Structure
- County Tile Drain
- County Regulated Drainage Ditch
- 200 Foot Setback From County Tile Drain and Drainage Ditch
- Power Performance Tower
- Power Performance Tower Setback
- Railroad
- 750 Foot Setback from Railroad
- Public Road
- 750 Foot Setback From Public Road
- Fresnel Zone
- 267 Foot Setback from Microwave Fresnel Zone
- 267 Foot Setback from Pipeline
- Participating Parcel
- 550 Foot Setback From Participating Parcel
- Non-Participating Parcel
- 750 Foot Setback From Non-Participating Parcel
- 2,501 Foot Setback From Public School Parcel
- City/Town Boundary
- 2,501 Foot Setback from Incorporated Municipality
- Setback Area
- Township Boundary

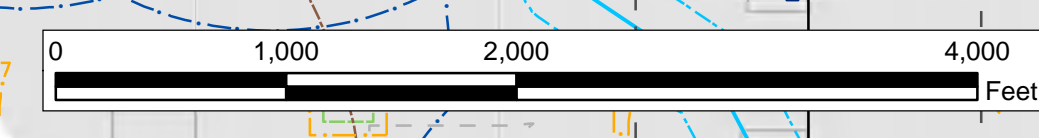
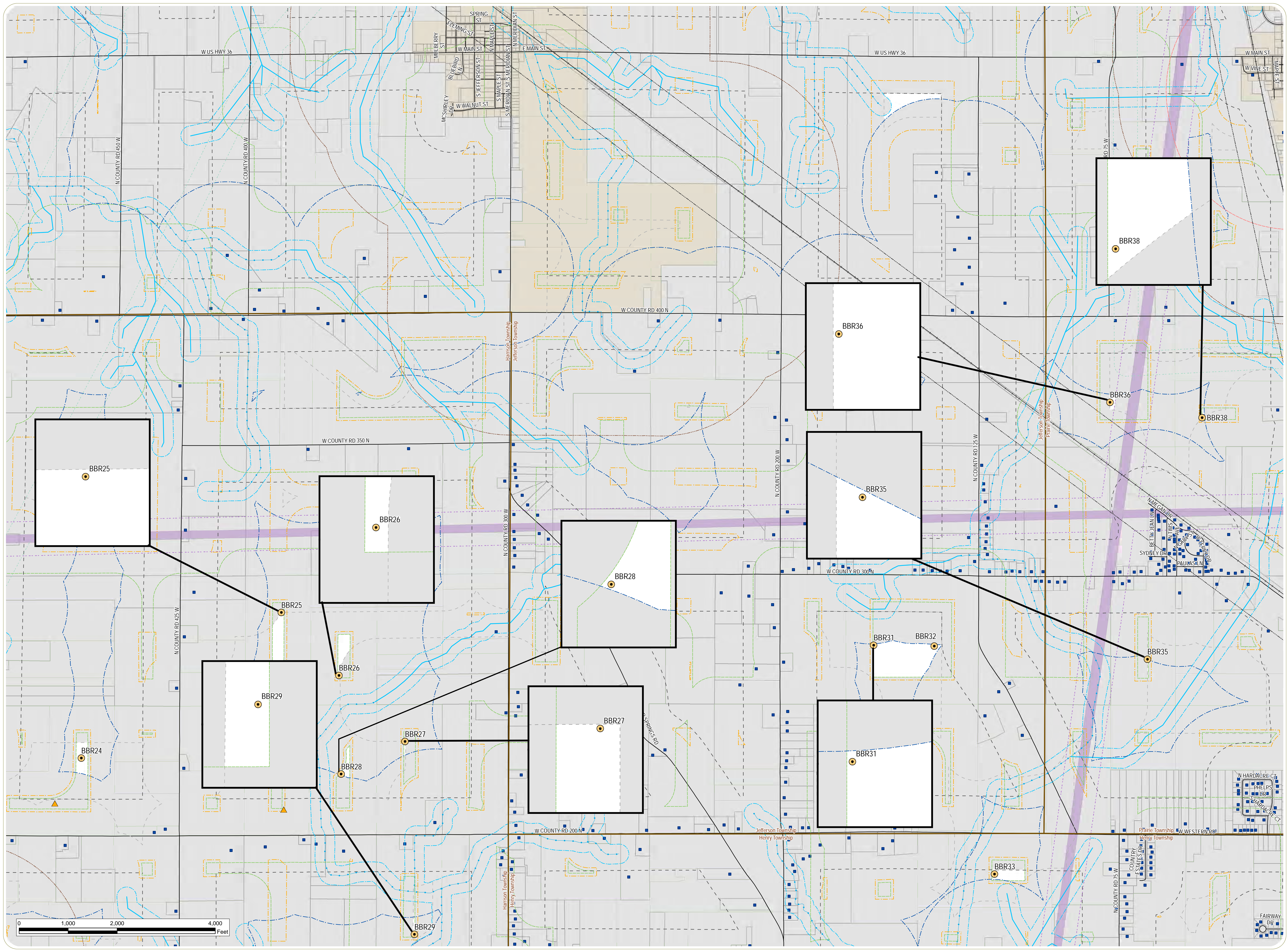
Page 2 of 4



Notes: 1. Basemap: Henry County parcel and public road data (2018). 2. This map was generated in ArcMap on May 30, 2019. 3. Power Performance Tower setback based on 1.5 x height of the Power Performance Tower from public roads, overhead transmission lines, parcel lines, and railroads. 4. This is a color graphic. Reproduction in grayscale may misrepresent the data.



www.edrpc.com



Big Blue River Wind Farm

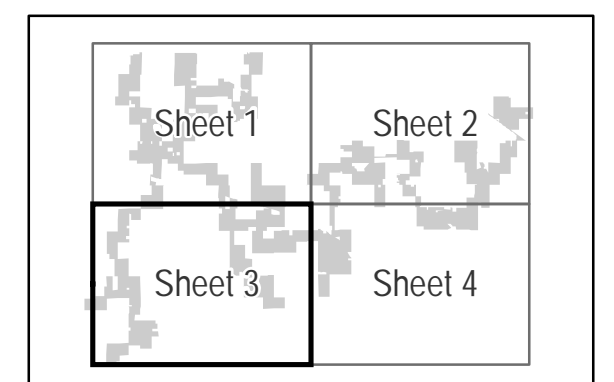
Fall Creek, Greensboro, Harrison, Jefferson, and Prairie Townships, Henry County, Indiana

Sheet 2: Setbacks

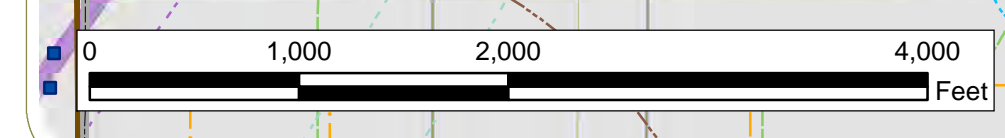
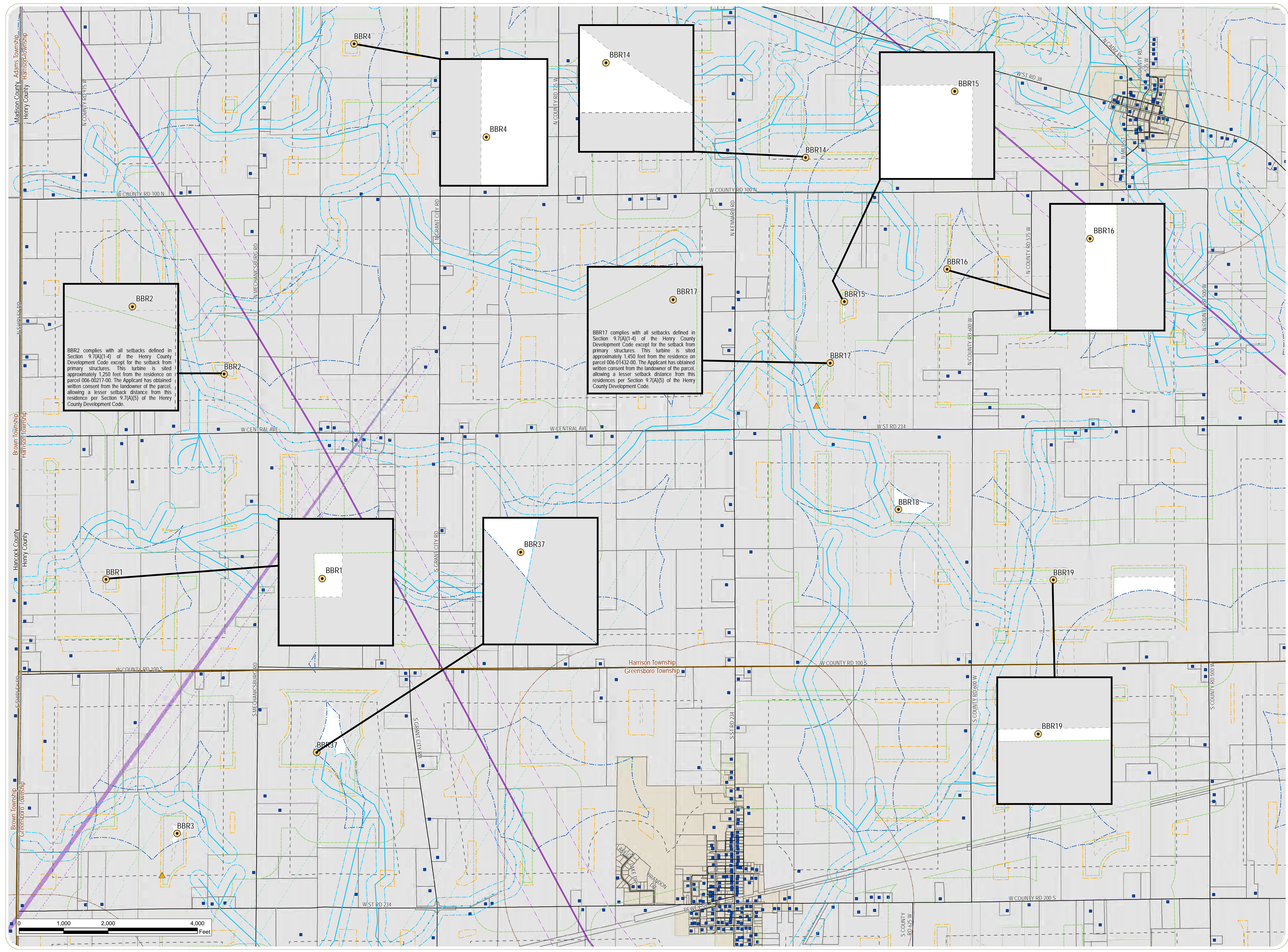
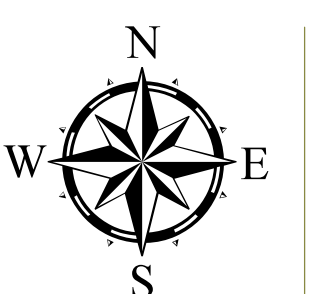
- Wind Turbine
- Primary Structure
- 1,501 Foot Setback From Primary Structure
- County Tile Drain
- County Regulated Drainage Ditch
- 200 Foot Setback From County Tile Drain and Drainage Ditch
- Existing Overhead Electric Transmission Line
- 750 Foot Setback from Overhead Transmission Line
- Power Performance Tower
- Power Performance Tower Setback
- Public Road
- 750 Foot Setback From Public Road
- Fresnel Zone
- 267 Foot Setback from Microwave Fresnel Zone
- 267 Foot Setback from Pipeline
- Participating Parcel
- 550 Foot Setback From Participating Parcel
- Non-Participating Parcel
- 750 Foot Setback From Non-Participating Parcel
- City/Town Boundary
- 2,501 Foot Setback from Incorporated Municipality
- Setback Area
- Township Boundary
- County Boundary

BBR2 complies with all setbacks defined in Section 9.7(A)(1-4) of the Henry County Development Code except for the setback from primary structures. This turbine is sited approximately 1,250 feet from the residence on parcel 006-00217-00. The Applicant has obtained written consent from the landowner of the parcel, allowing a lesser setback distance from this residence per Section 9.7(A)(5) of the Henry County Development Code.

BBR17 complies with all setbacks defined in Section 9.7(A)(1-4) of the Henry County Development Code except for the setback from primary structures. This turbine is sited approximately 1,450 feet from the residence on parcel 006-01432-00. The Applicant has obtained written consent from the landowner of the parcel, allowing a lesser setback distance from this residence per Section 9.7(A)(5) of the Henry County Development Code.



Notes: 1. Basemap: Henry County parcel and public road data (2018). 2. This map was generated in ArcMap on May 30, 2019. 3. Power Performance Tower setback based on 1.5 x height of the Power Performance Tower from public roads, overhead transmission lines, parcel lines, and railroads. 4. This is a color graphic. Reproduction in grayscale may misrepresent the data.



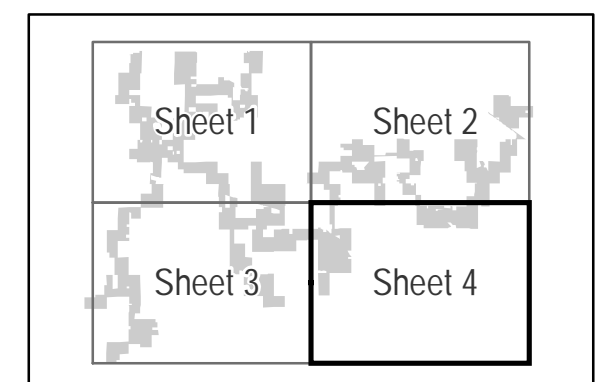
Big Blue River Wind Farm

Fall Creek, Greensboro, Harrison, Jefferson, and Prairie Townships, Henry County, Indiana

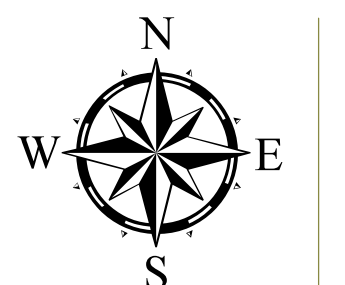
Sheet 2: Setbacks

- Wind Turbine
- Primary Structure
- 1,501 Foot Setback From Primary Structure
- County Tile Drain
- County Regulated Drainage Ditch
- 200 Foot Setback From County Tile Drain and Drainage Ditch
- Existing Overhead Electric Transmission Line
- 750 Foot Setback from Overhead Transmission Line
- Power Performance Tower Setback
- Public Road
- 750 Foot Setback From Public Road
- Fresnel Zone
- 267 Foot Setback from Microwave Fresnel Zone
- 267 Foot Setback from Pipeline
- Participating Parcel
- 550 Foot Setback From Participating Parcel
- Non-Participating Parcel
- 750 Foot Setback From Non-Participating Parcel
- School Parcel
- 2,501 Foot Setback From Public School Parcel
- Hospital/Nursing Home Parcel
- 2,501 Foot Setback from Nursing Home or Hospital Parcel
- City/Town Boundary
- Township Boundary

Page 4 of 4



Notes: 1. Basemap: Henry County parcel and public road data (2018). 2. This map was generated in ArcMap on May 30, 2019. 3. Power Performance Tower setback based on 1.5 x height of the Power Performance Tower from public roads, overhead transmission lines, parcel lines, and railroads. 4. This is a color graphic. Reproduction in grayscale may misrepresent the data.



www.edrpc.com

